

Palomares Hills Homeowners Association Presentation

March 5, 2025



Fire Station 7



Alameda County Fire Department
"Dedicated to superior service."

Fire Station 7 (Existing)

- Built in 1986
- Approx 2,800 sf
- Small by current standards
- Type I & Type III Engines
- Services urban wildlife interface, I-580 East to Dublin & west to Grove Way, Castro Valley

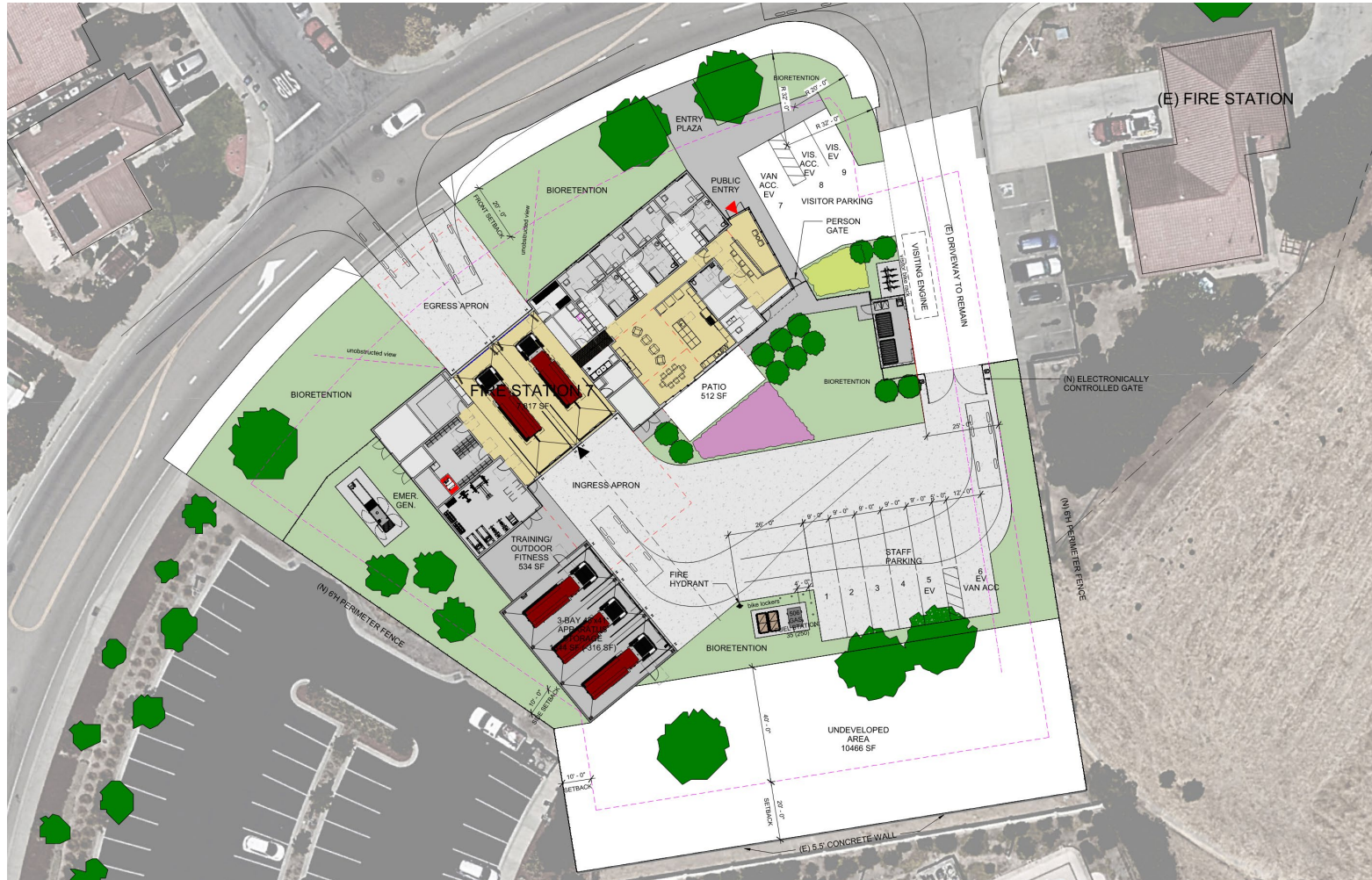


Fire Station 7 (New)

- 6855 Villareal Dr
- Station is being built adjacent to existing fire station
- Will accommodate ACFDs current and future needs
- One story station



Fire Station 7 (Preliminary Site Plan)



Alameda County Fire Department
"Dedicated to superior service."

Fire Station 7 (Palomares Hill)

- 6855 Villareal Dr
- Station is being built adjacent to existing fire station
- Primary apparatus:
 - Type 1 engine
- Daily Staffing:
 - (3) personnel



Alameda County Fire Department
"Dedicated to superior service."

Fire Station Side View



Alameda County Fire Department
"Dedicated to superior service."

Fire Station Cutaway View



Alameda County Fire Department
"Dedicated to superior service."

Planned Next Steps

- Design Build Entity was on boarded end of January:
 - Charles Pankow Builders + BRW Architects
- Ongoing work:
 - Continued development of the design from the Bridging Documents
 - Outreach to permitting and utility agencies
- Target milestones:
 - Development of design: February – December 2025
 - Start construction: November 2025
- On the Horizon:
 - Public art through Alameda County Arts Commission (<https://arts.acgov.org>)
- Next update: Quarter 3, 2025

Public Art Program

- Partnership with the Office of the Alameda County Arts Commission
- Art type and site are being identified by ACFD, Arts Commission and design team
- Opportunities for community involvement:
 - Artist Selection Committee
 - Feedback on Artwork Proposals
- Specific info about community involvement will be shared at a future date
- One artist will be selected from the Art Commission's prequalified list of artists
- Art project will follow the Arts Commission's standard process including close collaboration between ACFD and Arts Commission
- Updates will be provided to Municipal Advisory Councils and community groups.
- Reviews and approvals by the Alameda County Public Art Advisory Committee, Members of the Alameda County Arts Commission and Board of Supervisors.



Questions or Feedback?



Alameda County Fire Department
"Dedicated to superior service."