

Castro Valley MAC Presentation

May 20, 2024



Stations 7 & 25 Update



Alameda County Fire Department
"Dedicated to superior service."

Fire Station 7 (Existing)

- Built in 1986
- Approx 2,800sf
- Small by current standards
- Type I & Type III Engines
- Services urban wildlife interface, I-580 East to Dublin & west to Grove Way, Castro Valley



Fire Station 7 (New)

- 6855 Villareal Dr
- Station is being built adjacent to existing fire station
- Will accommodate ACFDs current and future needs
- Proposed to be one story



Fire Station 7 (Floor Plan)



Fire Station 7 (Palomares Hill)

- 6855 Villareal Dr
- Station is being built adjacent to existing fire station
- Primary apparatus:
 - Type 1 engine
- Daily Staffing:
 - (3) personnel



Fire Station Side View



Alameda County Fire Department
"Dedicated to superior service."

Fire Station Cutaway View



Alameda County Fire Department
"Dedicated to superior service."

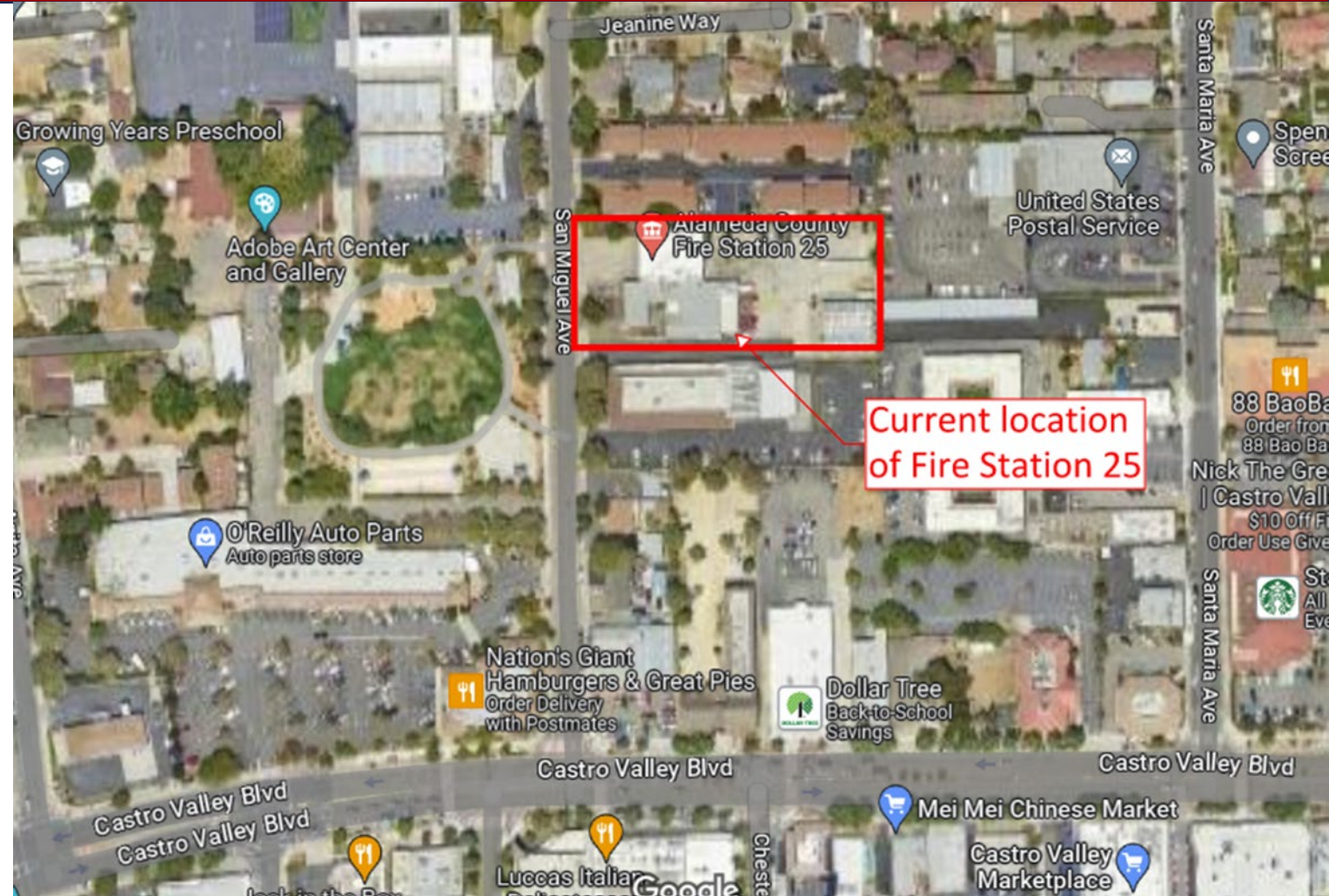
Fire Station 25 (Existing)

- 20336 San Miguel Ave.
- Built in 1966
- Approx 10,000 sf 1-story building
- Headquarters for Battalion 2
- Fire Station 25 does not meet ACFD's accessibility, housing, or facility needs

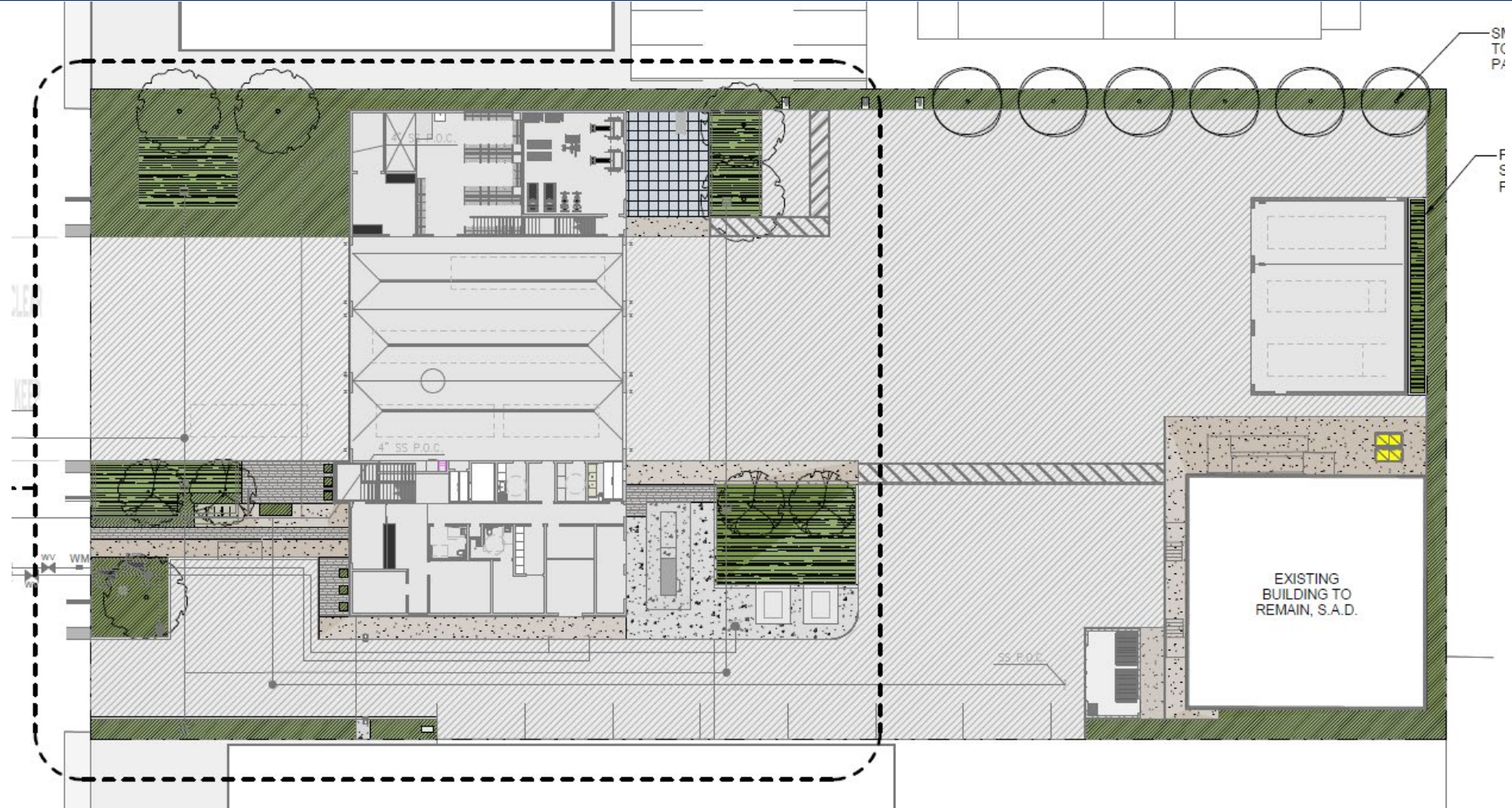


Fire Station 25 Site Overview

- Station to be rebuilt on site
- Will accommodate ACFDs current and future needs
- Two-story station



Fire Station 25 (Site Plan)



Fire Station 25 Castro Valley

- 20336 San Miguel Ave
- Station being built on same site as current station
- Primary apparatus:
 - Type 1 engine
 - Tiller truck
 - Battalion Chief
- Daily Staffing:
 - (8) personnel



Alameda County Fire Department
"Dedicated to superior service."

Planned Next Steps

- Ongoing work:
 - Bridging Documents in development
 - CEQA documentation
 - Procure DBE services – short list of 5 firms
- Target milestones:
 - Completion of “Bridging Documents”: May 2024
 - CEQA documentation submitted for review: May 2024
 - Proposals from Design-Builders: June 2024 – September 2024
 - Award contract to Design-Builder: October 2024
- On the Horizon:
 - Public art through Art Commission (<https://arts.acgov.org>)
- Next update: Quarter 3 - 2024



Public Art Program

- Partnership with the Office of the Alameda County Arts Commission
- Art type and site are being identified by ACFD, Arts Commission and design team
- Opportunities for community involvement:
 - Artist Selection Committee
 - Feedback on Artwork Proposals
- Specific info about community involvement will be shared at a future date
- One artist will be selected from the Art Commission's prequalified list of artists
- Art project will follow the Arts Commission's standard process including close collaboration between ACFD and Arts Commission
- Updates will be provided to Municipal Advisory Councils and community groups.
- Reviews and approvals by the Alameda County Public Art Advisory Committee, Members of the Alameda County Arts Commission and Board of Supervisors.



Questions or Feedback?



Alameda County Fire Department
"Dedicated to superior service."

Fire Station 22 San Lorenzo

- 587 Paseo Grande
- Station being built on new site
- Primary apparatus:
 - Type 1 engine
- Daily Staffing:
 - (3) personnel



Architectural Character

- Modernized “traditional” Fire Stations
- Unified exterior finishes
- Unique features by Station and neighborhood/site

FS 25



FS 22



FS 7



Schedule

Milestone Activity	Station 7	Station 25	Station 22
Complete Bridging Documents	May 2024	May 2024	September 2024*
Design Build Entity (DBE) RFP/Selection	June 2024 – September 2024	June 2024 – September 2024	October 2024 – January 2025
DBE Design Phase/Permitting	October 2024 – August 2025	October 2024 – August 2025	February 2025 – December 2025
Construction	June 2025 – October 2026	July 2025 – January 2027	November 2025 – March 2027

